



■ **Model No. CEP-15SS**

Height : 319 mm
Weight : 8.5kg (w/o battery)
Weight : 10kgs (with 2 batteries)

■ **Specifications:**

Max. Pressure : 700 bar
Oil Required : 1500 cc

■ **Oil Delivery:**

1.2 L / min at low pressure
0.3 L / min at high pressure

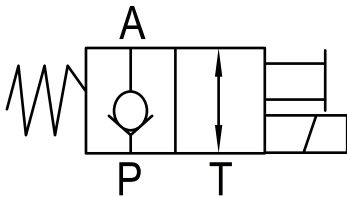
■ **Features:**

- Pressure and operation data of date by display function.
- Programming Switch for crimping, cutting or lifting propose on the panel.
- Warning Function: Buzzer alert at long deep if crimping not complete and losing pressure when failure caused.
- Display related pumping pressure and battery capacity.
- Environmentally design for saving energy as automatic switch to sleep mode after 3 mins without any activate action.
- Interior Counting function attached
- PSI / BAR unit available.
- Shoulder strap for high wearing comfort.

■ **Accessories:**

- 18V Battery 4.0Ah, 110V or 230V Charger.
(See page 77)

■ **Hydraulic Symbol Table**



■ Close View of NEW CEP-15SS Features



● Strap Installation

The battery-hydraulic pumps are ready to use for overhead operation with the secured strap as easy carrying propose.



● Remote controller as optional operation mode.



● Operate with powerful, high-capacity Li-Ion batteries along and interchangeable of A \ B battery individual detect capacity.



● LCD display.
● Maintenance warning attached.



● Bosch battery power indicator 18V Li-ion battery.



● Room for remote control.
● Overload relay attached.
● Low-voltage protection for extending battery life cycle.
● Intelligent motor control brake.
● Maintenance warning attached.