



■ **Model No. EP-30MS**

Height : 454 mm
Weight : 15 kgs (w/o oil)

■ **Specifications:**

Max. Pressure : 700 bar
Oil Required : 3000 cc
2 way, 2 position manual valve
Drive unit : 220V/AC or 110V/AC \ 50/60Hz

■ **Oil Delivery:**

2.6 L / min at low pressure
0.32 L / min at high pressure

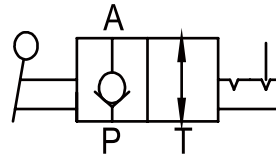
■ **Features:**

- With 5 meter remote control cable provides the user complete control to advance and retract.
- Two speed high performance.
- Pressure holds at 700 bar, ideal for maintenance and construction.
- Equipped with large-capacity one piece metal oil tank.

■ **Accessories:**

Hydraulic hose should be ordered separately.

■ **Hydraulic Symbol Table**



● Pressure Gauge



● Optional remote controller, shall order separately.



■ Model No. EP-30MD



Height : 454 mm
Weight : 15 kgs (w/o oil)

■ Specifications:

Max. Pressure : 700 bar
Oil Required : 3000 cc
4 way, 3 position manual valve
Drive unit : 220V/AC or 110V/AC ~ 50/60Hz

■ Oil Delivery:

2.6 L / min at low pressure
0.32 L / min at high pressure

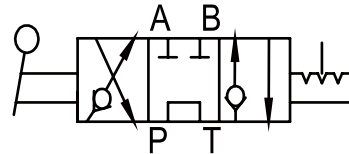
■ Features:

- With 5 meter remote control cable provides the user complete control to advance and retract.
- Two speed high performance.
- Pressure holds at 700 bar, ideal for maintenance and construction.
- Equipped with large-capacity one piece metal oil tank.

■ Accessories:

Hydraulic hose should be ordered separately.

■ Hydraulic Symbol Table



●Pressure Gauge



●Optional remote controller, shall order separately.



■ **Model No. EP-30S**

Height : 374 mm

Weight : 18.0 kgs (w/o oil)

■ **Specifications:**

Max. Pressure : 700 bar

Oil Required : 3000 cc

Input : Single phase 50/60Hz 110V 、 120V 、 220V 、 230V
350W motor

■ **Oil Delivery:**

2.6 L / min at low pressure

0.32 L / min at high pressure

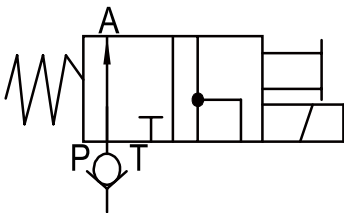
■ **Features:**

- Fully remote controlled, allows the operator to advance, hold or retract at any time.
- Two-stage pumping action.
- Cuts and crimps can be adjusted as necessary by stopping the advance or retract mode.
- 3/4 HP Heavy-Duty motor.
- Durable steel construction with built-in carrying handle.
- Low amperage requirement.
- Oil level is visible.

■ **Accessories:**

2M hydraulic hose attached

■ **Hydraulic Symbol Table**



• Optional remote controller, shall order separately.



■ Model No. **EP-76MS**

Height : 480 mm

Weight : 20.0 kgs (w/o oil)

■ Specifications:

Max. Pressure : 700 bar

Oil Required : 8000 cc

2 way, 2 position manual valve

Drive unit : 220V/AC or 100V/AC 50/60Hz \ 1/2Hp

■ Oil Delivery:

3.9 L / min at low pressure

0.2 L / min at high pressure

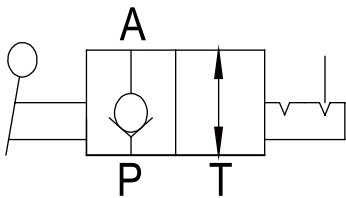
■ Features:

- With 5 meter remote control cable provides the user complete control to advance and retract.
- Two speed high performance.
- Equipped with single-phase, thermal protected induction motor to reduce noise level.
- Pressure holds at 700 bar, ideal for maintenance and construction.
- Equipped with large-capacity one piece metal oil tank.

■ Accessories:

Hydraulic hose should be ordered separately.

■ Hydraulic Symbol Table



• Optional remote controller, shall order separately.



■ **Model No. EP-76MD**

Height : 480 mm

Weight : 25.0 kgs (w/o oil)

■ **Specifications:**

Max. Pressure : 700 bar

Oil Required : 8000 cc

4 way, 3 position manual valve

Drive unit : 220V/AC or 110V/AC 50/60Hz \ 1/2Hp

■ **Oil Delivery:**

3.9 L / min at low pressure

0.2 L / min at high pressure

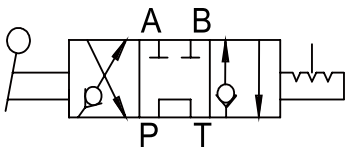
■ **Features:**

- With 5 meter remote control cable provides the user complete control to advance and retract.
- Two speed high performance.
- Equipped with a thermal protected induction motor to reduce noise level.
- Pressure holds at 700 bar, ideal for maintenance and construction.
- Equipped with large-capacity one piece metal oil tank.

■ **Accessories:**

Hydraulic hose should be ordered separately.

■ **Hydraulic Symbol Table**



• Optional remote controller, shall order separately.



■ Model No. EP-76SD

Height : 480 mm

Weight : 25.0 kgs (w/o oil)

■ Specifications:

Max. Pressure : 700 bar

Oil Required : 8000 cc

4 way, 3 position solenoid valve

Drive unit : 110V/AC or 240V/AC 50/60Hz \ 1/2Hp \ 3600 rpm

■ Oil Delivery:

3.9 L / min at low pressure

0.2 L / min at high pressure

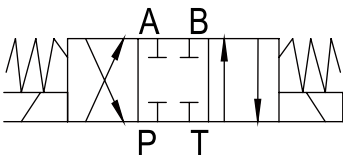
■ Features:

- With 5 meter remote control cable provides the user complete control to advance and retract.
- Two speed high performance.
- Equipped with a thermal protected induction motor to reduce noise level.
- Pressure holds at 700 bar, ideal for maintenance and construction.
- Equipped with large-capacity one piece metal oil tank.

■ Accessories:

Hydraulic hose should be ordered separately.

■ Hydraulic Symbol Table



• Optional remote controller, shall order separately.



MANUAL
Follow User Guide

MAINTAIN
Maintain Regularly

PROTECTION
Put On Goggles

PROTECTION
Work With Gloves

EASY
For Small Space

RELOAD
Back To Origin

■ **Model No. EP-76SS**

Height : 480 mm

Weight : 25.0 kgs (w/o oil)

■ **Specifications:**

Max. Pressure : 700 bar

Oil Required : 8000 cc

3 way, 2 position solenoid valve

Drive unit : 220VAC 100V~120V 、 210V~240V 、 50 / 60Hz 、 1/2Hp

■ **Oil Delivery:**

3.9 L / min at low pressure

0.2 L / min at high pressure

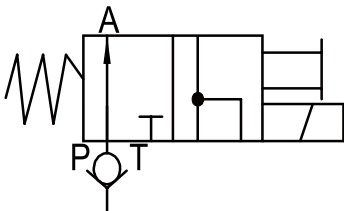
■ **Features:**

- With 5 meter remote control cable provides the user complete control to advance and retract.
- Two speed high performance.
- Equipped with single-phase, thermal protected induction motor to reduce noise level.
- Pressure holds at 700 bar, ideal for maintenance and construction.
- Equipped with large-capacity one piece metal oil tank.

■ **Accessories:**

Hydraulic hose should be ordered separately.

■ **Hydraulic Symbol Table**



• Optional remote controller, shall order separately.



■ Model No. EP-76SSC

Height : 480 mm
Weight : 25.2 kgs

■ Specifications:

Max. Pressure : 700 bar
Oil Required : 8,000 cc
3 way, 2 position solenoid valve
Drive unit : 220VAC 100V~120V、210V~240V、50 / 60Hz、1/2Hp

■ Oil Delivery:

3.9 L / min at low pressure
0.2 L / min at high pressure

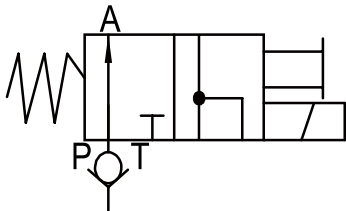
■ Features:

- With 5 meter remote control cable provides the user complete control to advance and retract.
- Two speed high performance.
- Equipped with single-phase, thermal protected induction motor to reduce noise level.
- Pressure holds at 700 bar, ideal for maintenance and construction.
- Equipped with large-capacity one piece metal oil tank.

■ Accessories:

Hydraulic hose should be ordered separately.

■ Hydraulic Symbol Table



●Air-Cooled Heat Exchanger



●Pressure Gauge



●Pressure Adjuster



●Optional remote controller, shall order separately.



■ **Model No. EP-200SD**

Height : 691 mm
Weight : 78.4 kgs (w/o oil)
Weight : 20.2 kgs (Enlarged Wheel Accessory)

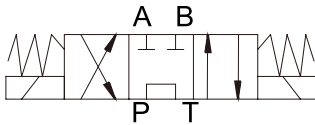
■ **Specifications:**

Max. Pressure : 700 bar
Oil Required : 20 L
Motor Size : 2 HP
Valve type : 4-way, 3-position Solenoid Valve
Input : 220V / 230V

■ **Oil Delivery:**

10.5 L / min at low pressure
1.0 L / min at high pressure

■ **Hydraulic Symbol Table**



● Pressure Gauge



■ **Features:**

- With 5 Meter Remote control cable provides the user complete control to advance and retract.
- Easy to use by one button control to advance and retract pumping.
- Two stage pumping of high performance.
- Equipped with single-phase, thermal-protected motor to reduce noise level.
- Equipped with large capacity one piece metal oil tank.

■ **Accessories:**

Hydraulic hose & Cooler Device : single-phase 220V / Flow @ 30L / min should be ordered separately.



● Optional remote controller, shall order separately.



■ Model No. **EP-200SDCF**

Height : 691 mm
 Weight : 84.5 kgs (w/o oil)
 Weight : 20.2 kgs (Enlarged Wheel Accessory)

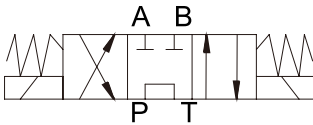
■ Specifications:

Max. Pressure : 700 bar
 Oil Required : 20 L
 Motor Size : 2 HP
 Valve type : 4-way, 3-position Solenoid Valve
 Input : 220V / 230V

■ Oil Delivery:

10.5 L / min at low pressure
 1.0 L / min at high pressure

■ Hydraulic Symbol Table



■ Features:

- With 5 Meter Remote control cable provides the user complete control to advance and retract.
- Easy to use by one button control to advance and retract pumping.
- Two stage pumping of high performance.
- Equipped with single-phase, thermal-protected motor to reduce noise level.
- Equipped with large capacity one piece metal oil tank.

■ Accessories:

Hydraulic hose & Cooler Device : single-phase 220V / Flow @ 30L / min should be ordered separately.



● Pressure Gauge



● Air-Cooled Heat Exchanger + Spin-On Return Filter



● Optional remote controller, shall order separately.



■ **Model No. EP-200MD**

Height : 691 mm
Weight : 76.4 kgs (w/o oil)
Weight : 20.2 kgs (Enlarged Wheel Accessory)

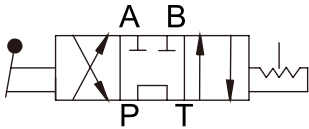
■ **Specifications:**

Max. Pressure : 700 bar
Oil Required : 20 L
Motor Size : 2 HP
Valve type : 4-way, 3-position Manual Valve
Input : 220V / 230V

■ **Oil Delivery:**

10.5 L / min at low pressure
1.0 L / min at high pressure

■ **Hydraulic Symbol Table**



■ **Features:**

- With 5 Meter Remote control cable provides the user complete control to advance and retract.
- Easy to use by one button control to advance and retract pumping.
- Two stage pumping of high performance.
- Equipped with single-phase, thermal-protected motor to reduce noise level.
- Equipped with large capacity one piece metal oil tank.

■ **Accessories:**

Hydraulic hose & Cooler Device : single-phase 220V / Flow @ 30L / min should be ordered separately.



•Optional remote controller, shall order separately.



■ Model No. **EP-200MDCF**

Height : 691 mm
Weight : 82.5 kgs (w/o oil)
Weight : 20.2 kgs (Enlarged Wheel Accessory)

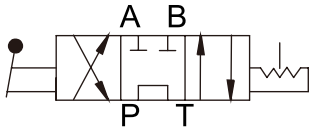
■ Specifications:

Max. Pressure : 700 bar
Oil Required : 20 L
Motor Size : 2 HP
Valve type : 4-way, 3-position Manual Valve
Input : 220V / 230V

■ Oil Delivery:

10.5 L / min at low pressure
1.0 L / min at high pressure

■ Hydraulic Symbol Table



■ Features:

- With 5 Meter Remote control cable provides the user complete control to advance and retract.
- Easy to use by one button control to advance and retract pumping.
- Two stage pumping of high performance.
- Equipped with single-phase, thermal-protected motor to reduce noise level.
- Equipped with large capacity one piece metal oil tank.

■ Accessories:

Hydraulic hose & Cooler Device : single-phase 220V / Flow @ 30L / min should be ordered separately.



•Air-Cooled Heat Exchanger
+
Spin-On Return Filter



•Optional remote controller, shall order separately.

