

■ Model No. **GHP-5**

Height : 590 mm
Weight : 58 kgs (with oil)

■ Specifications:

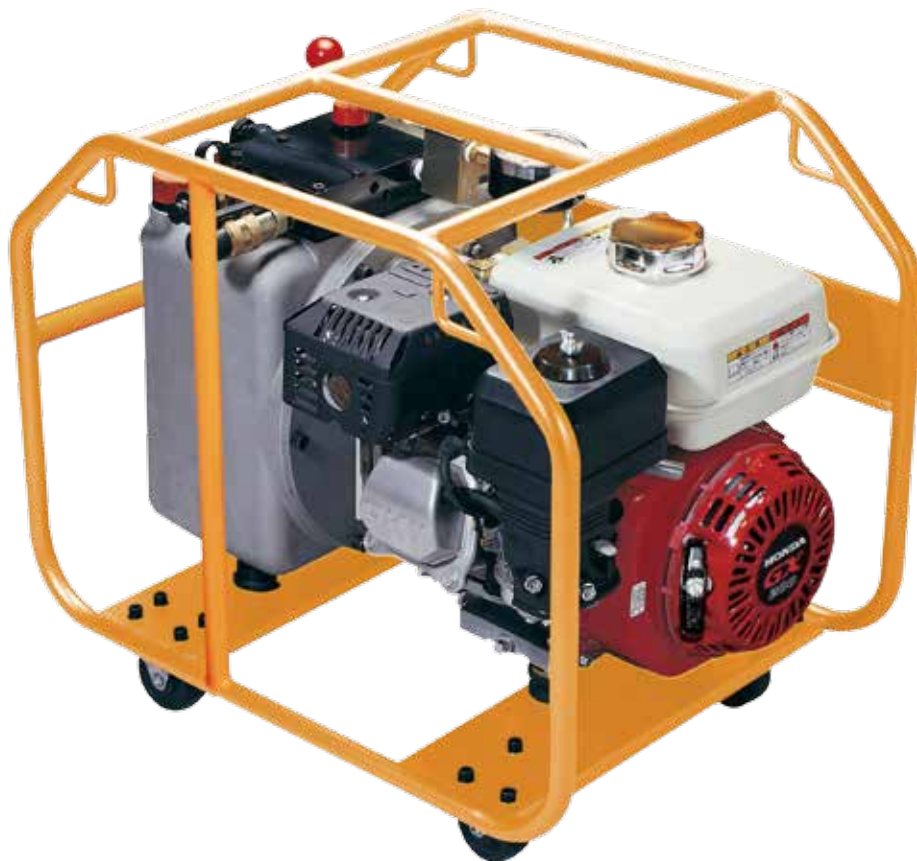
Max. Pressure : 700 bar
Oil Required : 9.5 L
Motor Size : 6.5 HP
Valve type : 4-way, 3-position
Motor Manufacturer : Honda
Manually controlled engine

■ Oil Delivery:

13.4 L / min at low pressure
2.4 L / min at high pressure

■ Features:

- Pressure gauge can be located in upright position for better reading.
- Equipped with a 4-way, 3-position manual valve to prevent the electric control valve being locked and not able to perform retire because of high temperature.
- Supplied with a rack with rollers.
- High efficiency and fast working gasoline pump.



■ Model No. **GHP-5W**

Height : 606 mm
Weight : 71.4 kgs (with oil)
Weight : 19.8 kgs (Enlarged Wheel Accessory)

■ Specifications:

Max. Pressure : 700 bar
Oil Required : 9.5 L
Motor Size : 6.5 HP
Valve type : 4-way, 3-position
Motor Manufacturer : Honda
Manually controlled engine

■ Oil Delivery:

13.4 L / min at low pressure
2.4 L / min at high pressure

■ Features:

- Pressure gauge can be located in upright position for better reading.
- Equipped with a 4-way, 3-position manual valve to prevent the electric control valve being locked and not able to perform retire because of high temperature.
- Supplied with a rack with rollers.
- High efficiency and fast working gasoline pump.



■ GHP-5W Enlarged Wheel Accessory
(Sold Separately)



- Improved design of enlarged tires to eliminate bumpy road



■ **Model No. GHP-5SD**



Height : 663 mm
Weight : 62 kgs (with oil)

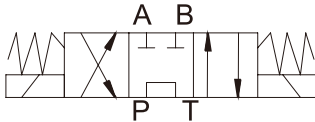
■ **Specifications:**

Max. Pressure : 700 bar
Oil Required : 9.5 L
Motor Size : 6.5 HP
Valve type : 4-way, 3-position Solenoid Valve
Motor Manufacturer : Honda
Manually controlled engine

■ **Oil Delivery:**

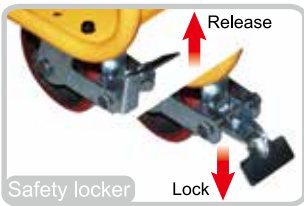
13.4 L / min at low pressure
2.4 L / min at high pressure

■ **Hydraulic Symbol Table**



■ **Features:**

- Pressure gauge located in upright position for better reading.
- Supplied with inflatable tires and rotated 360° front wheels for changing direction easily.
- High efficiency and fast working gasoline pump
- GHP-5SD permits the user to advance, hold and retract the ram at both single and double acting presses.
- Suitable for double acting compression heads used in transmission line stringing and maintenance or single acting compression heads for overhead work fields.



• Rotatable 360° front wheel, easy to change direction.



• Improved design of enlarged tires to eliminate bumpy road



• Optional remote controller, shall order separately.



■ Model No. **GHP-5SDRM**



Height : 663 mm
Weight : 63 kgs (with oil)

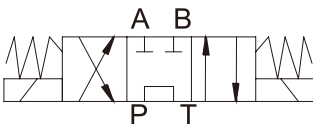
■ Specifications:

Max. Pressure : 700 bar
Oil Required : 9.5 L
Motor Size : 6.5 HP
Valve type : 4-way, 3-position Solenoid Valve
Motor Manufacturer : Honda
Manually controlled engine

■ Oil Delivery:

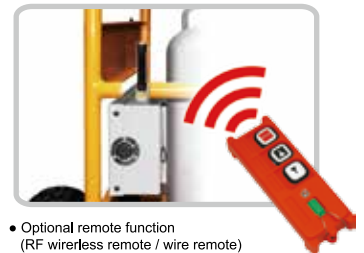
13.4 L / min at low pressure
2.4 L / min at high pressure

■ Hydraulic Symbol Table

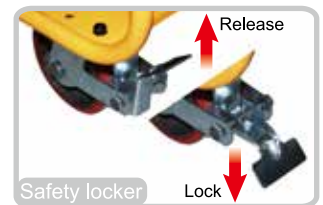


■ Features:

- Pressure gauge located in upright position for better reading.
- Supplied with inflatable tires and rotated 360° front wheels for changing direction easily.
- High efficiency and fast working gasoline pump
- GHP-5SD permits the user to advance, hold and retract the ram at both single and double acting presses.
- Suitable for double acting compression heads used in transmission line stringing and maintenance or single acting compression heads for overhead work fields.
- Radio Frequency remote controller is able to be used wireless at less 30 meters distance by its remote operation.



• Optional remote function (RF wireless remote / wire remote)



• Rotatable 360° front wheel, easy to change direction.



• Improved design of enlarged tires to eliminate bumpy road



• Optional remote controller, shall order separately.

