

## ■ Compression Capacity Chart

Model No. Compression Tools	Output (tons)	Ram Stroke (mm)	Action	Weight (kg)	Applicable Compression Range		
					Steel Lugs / Conductors	Copper Lugs / Conductors	Aluminum Lugs / Conductors
HH-400HE	14.3	27.8	Single	3.7	(Accepts all dies used for Alcoa, Burndy, T&B, Klauke, Cembre and Blackburn 6 ton compressor)	Up to 400 mm <sup>2</sup>	Up to 300 mm <sup>2</sup>
9H-150HE	12.7	17.0	Single	2.6	150 mm <sup>2</sup>	150 mm <sup>2</sup>	120 mm <sup>2</sup>
HYCP-185HE	5.3	17.3	Single	1.8	(Accepts BEKU type dies)	185 mm <sup>2</sup>	150 mm <sup>2</sup>
HYCP-240HE	5.3	13.5	Single	2.1		240 mm <sup>2</sup>	185 mm <sup>2</sup>
PH-240HE	6.4	19.3	Single	2.6	(Accepts all dies used for Alcoa, Burndy, T&B, Klauke, Cembre and Blackburn 6 ton compressor)	240 mm <sup>2</sup>	185 mm <sup>2</sup>
UCP-240HE	8.8	16.5	Single	2.7	(Accepts BEKU type dies)	240 mm <sup>2</sup>	185 mm <sup>2</sup>
UB-400HE	12.7	26.0	Single	4.6	(Accepts all dies used for Alcoa, Burndy, T&B, Klauke, Cembre and Blackburn 12 ton compressor)	Up to 400 mm <sup>2</sup>	Up to 300 mm <sup>2</sup>
UCP-2712HE	12.7	27.0	Single	4.0		Up to 400 mm <sup>2</sup>	Up to 300 mm <sup>2</sup>
UB-412HE	11.6	32.0	Single	4.9		Up to 400 mm <sup>2</sup>	Up to 300 mm <sup>2</sup>
HYCP-4413HE	12.7	44.0	Single	5.1		Up to 400 mm <sup>2</sup>	Up to 300 mm <sup>2</sup>
UC-6FTHE	6.4	32.0	Single	3.2		(Dieless compressor)	Anderson type connectors up to 750 MCM
UC-6HE	6.4	29.8	Single	3.2	Anderson type connectors up to 500 MCM		
HYCP-15HE	14.1	50.6	Single	6.9	(U-type dies can be used with adaptor die seats)	Up to 400 mm <sup>2</sup>	Up to 400 mm <sup>2</sup>
HYCP-630HE	22.5	27.5	Single	5.6		Up to 400 mm <sup>2</sup>	Up to 400 mm <sup>2</sup>
HYCP-451000HE	44.5	35.5	Single	11.6		16-1000 mm <sup>2</sup>	
HYCP-500HE	31.0	30.0	Single	17.1	(Suitable for JIS C2804 terminals)	8-500 mm <sup>2</sup>	30-590 mm <sup>2</sup>
HYCP-60ST	55.0	38.7	Single	21.3	Up to Ø 60 mm O.D. Sleeves		
HYCP-60D	55.0	38.0	Single	23.3			
UA-100STS	100.0	29.5	Single	36.0	Up to Ø 32 mm O.D. Sleeves	Up to Ø 64 mm O.D. Sleeves	Up to Ø 71 mm O.D. Sleeves
UA-100ST	100.0	29.5	Double	37.6			
SR-100C	100.0	22.0	Double	31.4			
100W	100.0	26.9	Double	33.8			
200W	200.0	37.0	Double	74.0	Up to Ø 50 mm O.D. Sleeves	Up to Ø 86 mm O.D. Sleeves	Up to Ø 100 mm O.D. Sleeves

# COMPRESSION HEAD

## ■ Model No. **HH-400HE**

Length : 277 mm

Weight : 3.7 kgs

## ■ Specifications:

Max. Pressure : 700 bar

Oil Required : 57 cc

Max. Output : 14.3 tons / 140 kN

## ■ Features:

- Yoke-type head design is solid and durable.
- Positive die locking mechanism holds dies firmly in place.
- Operated by are hydrable pump with rated oil pressure of 700 bar (10,000 psi).
- Dies sold separately (See page 111)

## ■ Accessories:

Plastic carrying case

- Dies sold separately (See page 111)



## ■ Model No. 9H-150HE

Length : 246 mm

Weight : 2.6 kgs

## ■ Specifications:

Max. Pressure : 700 bar

Oil Required : 31 cc

Max. Output : 12.7 tons / 125 kN

## ■ Crimping Capacity:

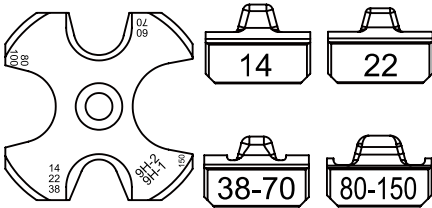
- For non-Insulated terminals and sleeves up to 150mm<sup>2</sup>
- With Indentors 14, 22, 38~70 and 80~150mm<sup>2</sup>

## ■ Features:

- Light weight, compact and slim design.
- Rotary nest for easy setting.
- Operated any hydraulic pump with rated oil pressure of 700 bar(10,000psi).

## ■ Accessories:

Plastic carrying case



# COMPRESSION HEAD

## ■ Model No. **HYCP-185HE**

Length : 264 mm

Weight : 1.8 kgs

## ■ Specifications:

Max. Pressure : 700 bar

Oil Required : 13 cc

Max. Output : 5.3 tons / 52 kN

## ■ Crimping Capacity:

- Accepts BEKU type dies
- Stock Dies are for DIN 46235 Terminals
- Dies sold separately (See page 151)  
(AHE 1016/2535/5070/95120/150/185)

## ■ Accessories:

Plastic carrying case



## ■ Model No. **HYCP-240HE**

Length : 263 mm

Weight : 2.1 kgs

## ■ Specifications:

Max. Pressure : 700 bar

Oil Required : 13 cc

Max. Output : 5.3 tons / 52 kN

## ■ Crimping Capacity:

- Accepts BEKU type dies
- Stock Dies are for DIN 46235 Terminals
- Dies sold separately (See page 151)  
(AHE1016/2535/5070/95120/150/185/240)

## ■ Accessories:

Plastic carrying case



## ■ Model No. **PH-240HE**

Length : 209 mm

Weight : 2.7 kgs

## ■ Specifications:

Max. Pressure : 700 bar

Oil Required : 14 cc

Max. Output : 6.4 tons / 65 kN

## ■ Crimping Capacity:

- Max. Compression : 240 mm<sup>2</sup> Aluminum , lugs
- Accepts all dies used for Alcoa, Burndy, T&B, Klauke, Cembre and Blackburn 6 ton compressors
- Dies sold separately (See page 152)  
(T16/25/35/50/70/95/120/150/185/240)

## ■ Features:

- Light weight, compact and slim design.
- Operated any hydraulic pump with rated oil pressure of 700 bar(10,000psi).

## ■ Accessories:

Plastic carrying case



※ Crimping without die sets is prohibited.



## ■ Model No. **UCP-240HE**

Height : 213 mm

Weight : 2.6 kgs

## ■ Specifications:

Max. Pressure : 700 bar

Oil Required : 24 cc

Max. Output : 8.8 tons / 86 kN

## ■ Crimping Capacity:

- Accepts BEKU type dies
- Hex. Crimping : 10-240 mm<sup>2</sup>
- Cu sleeves & lugs NFC 20.130 : 10 to 240 mm
- Cu or Al bare or insulated sleeve : E54 to E230
- Cu or Al sleeves & lugs DIN 48083 : KZ6 to KZ25
- Pre - rounding : 35 to 240 mm
- Dies sold separately (See page 155)

## ■ Features:

- Light weight, compact and slim design.
- Operated any hydraulic pump with rated oil pressure of 700 bar(10,000psi).

## ■ Accessories:

Plastic carrying case



## ■ Model No. **UB-400HE**

Length : 260 mm

Weight : 4.6 kgs

## ■ Specifications:

Max. Pressure : 700 bar

Oil Required : 47 cc

Max. Output : 12.7 tons / 125 kN

Jaw Opening : 26 mm

## ■ Crimping Capacity:

- Max. Compression : 400 mm<sup>2</sup> copper lugs
- Accepts all dies used for Alcoa, Burndy, T&B, Klauke, Cembre and Blackburn 12-ton compressors
- Dies sold separately (See page 151)  
(CU 16/25/35/50/70/95/120/150/185/240/300/400)

## ■ Features:

- C-frame has open jaw for easy access to the fitting.
- Operated by air hydrurable pump with rated oil pressure of 700 bar (10,000 psi).
- Single action cylinder with spring return.
- Dies are easy to change.
- Crimping capacity identical to UB-400 tool.  
(See page 118 \ 119)

## ■ Accessories:

Plastic carrying case



※ Crimping without die sets is prohibited.





## ■ Model No. **UCP-2712HE**

Length : 247 mm

Weight : 4.0 kgs

## ■ Specifications:

Max. Pressure : 700 bar / 10,000 psi

Oil Required : 49 cc

Max. Output : 12.7 tons / 125 kN

## ■ Crimping Capacity:

- Max. Compression : 400 mm<sup>2</sup> copper lugs
- Accepts all dies used for Alcoa, Burndy, T&B, Klauke, Cembre and Blackburn 12-ton compressors
- Dies sold separately (See page 151)  
(CU 16/25/35/50/70/95/120/150/185/240/300/400)

## ■ Features:

- Operated by any 700 bar / 10,000psi rated pump.
- Single action cylinder with spring return.
- Lock pin design holds die firmly in place.
- Die sizes available : CU16~CU400mm<sup>2</sup>
- Custom die sets are manufactured on request.

## ■ Accessories:

Plastic carrying case



※ Crimping without die sets is prohibited.



## ■ Model No. UB-412HE

Length : 258 mm  
Weight : 4.2 kgs

### ■ Specifications:

Max. Pressure : 700 bar  
Oil Required : 53 cc  
Max. Output : 11.6 tons / 114 kN  
Jaw Opening : 32mm

### ■ Crimping Capacity:

- Max. Compression : 400mm<sup>2</sup> copper lugs
- Accepts all dies used for Alcoa, Burndy, T&B, Klauke, Cembre and Blackburn 12-ton compressors
- Dies sold separately (See page 151)  
(CU16/25/35/50/70/95/120/150/185/240/300/400)

### ■ Features:

- C-frame has open jaw for easy access to the fitting.
- Operated by any hydraulic pump with rated oil pressure of 700 bar (10,000 psi).
- Single action cylinder with spring return.
- Dies are easy to change.
- Crimping capacity identical to UB-412 tool. (See page 122 - 123)

### ■ Accessories:

Plastic carrying case



## ■ Model No. H-412HE

Length : 335 mm  
Weight : 4.3 kgs

### ■ Specifications:

Max. Pressure : 700 bar  
Oil Required : 53 cc  
Max. Output : 11.6 tons / 114 kN  
Jaw Opening : 32mm

### ■ Crimping Capacity:

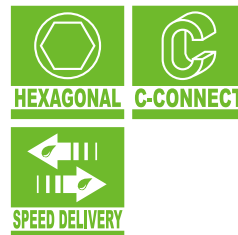
- Max. Compression : 400mm<sup>2</sup> copper lugs
- Accepts all dies used for Alcoa, Burndy, T&B, Klauke, Cembre and Blackburn 12-ton compressors
- Dies sold separately (See page 151)  
(CU16/25/35/50/70/95/120/150/185/240/300/400)

### ■ Features:

- C-frame has open jaw for easy access to the fitting.
- Operated by any hydraulic pump with rated oil pressure of 700 bar (10,000 psi).
- Single action cylinder with spring return.
- Handle grip for easy carrying.
- Crimping capacity identical to UB-412 tool. (See page 122 - 123)
- Dies are easy to change.

### ■ Accessories:

Plastic carrying case



※ Crimping without die sets is prohibited.



■ **Model No. HYCP-4413HE**

Length : 276 mm

Weight : 5.1 kgs

■ **Specifications:**

Max. Pressure : 700 bar

Oil Required : 80 cc

Max Output : 12.7 tons / 125 kN

Jaw Opening : 44 mm

■ **Crimping Capacity:**

- Dies sold separately (See page 151)  
(CU 16/25/35/50/70/95/120/150/185/240/300/400)

■ **Features:**

- Accepts all U type dies used for 12 ton compression tools.

■ **Accessories:**

Plastic carrying case



※ Crimping without die sets is prohibited.



# COMPRESSION HEAD

## ■ Model No. **UC-6F THE**

Length : 296 mm

Weight : 3.4 kgs

### ■ Specifications:

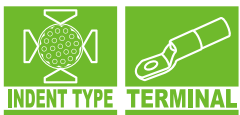
Max. Pressure : 700 bar  
Oil Required : 29 cc  
Max. Output : 6.4 tons / 62 kN  
Max. Crimping Capacity : up to 36mm outer diameter connector (UC-6FT)

### ■ Features:

- Light weight, compact and slim design.
- Operated by any hydraulic pump with rated oil pressure of 700 bar(10,000psi).
- Dieless compression to crimp Anderson style connectors up to 750 MCM.

### ■ Accessories:

Plastic carrying case



## ■ Model No. **UC-6HE**

Length : 278 mm

Weight : 3.2 kgs

### ■ Specifications:

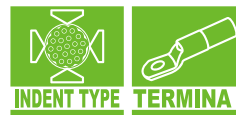
Max. Pressure : 700 bar  
Oil Required : 27 cc  
Max. Output : 6.4 tons / 62 kN  
Max. Crimping Capacity : up to 32mm outer diameter connector (UC-6)

### ■ Features:

- Light weight, compact and slim design.
- Operated by any hydraulic pump with rated oil pressure of 700 bar(10,000psi).
- Dieless compression to crimp Anderson style connectors up to 500 MCM.

### ■ Accessories:

Plastic carrying case



## ■ Model No. **HYCP-15THE**

Length : 375 mm

Weight : 6.9 kgs

### ■ Specifications:

Max. Pressure : 700 bar

Oil Required : 104 cc

Max. Output : 14.1 tons / 138 kN

Jaw Opening : 50.6 mm

(45mm with die adapter ADP-15THE)

### ■ Crimping Capacity:

- Compatible with BURNDY P dies
- Compatible with all dies used for Alcoa, Burndy, T&B, Klauke, Cembre and Blackburn 12-ton compressors when used with Adapter (ADP-15THE)
- Dies sold separately (See page 155)  
(CU 16/25/35/50/70/95/120/150/185/ 240/300/400)

### ■ Features:

- C-frame has open jaw for easy access to the fitting.
- Operated by any hydraulic pump with rated oil pressure of 700 bar (10,000 psi).
- Single action cylinder with spring return.
- Dies are easy to change.

### ■ Accessories:

Plastic carrying case (See page 219)



## ■ Model No. **ADP-15THE**

This adapter is designed for hydraulic compression head HYCP-15THE to interchange with die sets from other 12-ton tools (up to 400 mm<sup>2</sup>)



※ Crimping without die sets is prohibited.



# COMPRESSION HEAD

## ■ Model No. **HYCP-630HE**

Height : 320 mm

Weight : 5.6 kgs

## ■ Specifications:

Max. Pressure : 700 bar

Oil Required : 89 cc

Max. Output : 22.5 tons / 221 kN

## ■ Crimping Capacity:

- Max. Crimping Capacity : 630 mm<sup>2</sup>
- Compatible with all dies used for Alcoa, Burndy, T&B, Klauke, Cembre and Blackburn
- CU 400 / 500 / 630 dies included (See page 156)
- Available for 12 ton die when used with Adapter (ADP-630THE)
- 12 ton dies sold separately.

## ■ Features:

- Simple U-type head design is solid and durable.
- Lock pin design holds die firmly in place.
- Operated by any hydraulic pump with rated oil pressure of 700 bar (10,000 psi).
- Single action cylinder with spring return.

## ■ Accessories:

Plastic carrying case (See page 218)



## ■ Model No. **ADP-630HE**

This adapter is designed for hydraulic compression head HYCP-630HE to interchange with die sets from other 12-ton tools (up to 400 mm<sup>2</sup>)



※ Crimping without die sets is prohibited.



## ■ Model No. **HYCP-451000HE**

Height : 285 mm

Weight : 11.6 kgs

### ■ Specifications:

Max. Pressure : 700 bar

Oil Required : 226 cc

Max. Output : 44.5 tons / 436 kN

Ram Stroke : 35.5 mm

### ■ Crimping Capacity:

- Max. Crimping capacity: 1000 mm<sup>2</sup>
- Customized die sets can be ordered
- CU 400/500/630/800/1000 sold separately (See page 156)

### ■ Features:

- U-type head design is solid and durable.
- Lock pin design holds die firmly in place.
- Operated by any hydraulic pump with rated oil pressure of 700 bar (10,000 psi).
- Single action cylinder with spring return.

### ■ Accessories:

Plastic carrying case (See page 218)



## ■ Model No. **ADP-451000HE**

This adapter is designed for hydraulic compression head HYCP-451000HE to interchange with die sets from other 12-ton tools (up to 400 mm<sup>2</sup>)



※ Crimping without die sets is prohibited.



# COMPRESSION HEAD

## ■ Model No. **HYCP-500HE**

Height : 380 mm

Weight : 17.1 kgs

## ■ Specifications:

Max. Pressure : 700 bar

Oil Required : 133 cc

Max. Output : 31 tons / 304 kN

Ram Stroke : 30 mm

## ■ Crimping Capacity:

- Max. Crimping capacity : 500 mm<sup>2</sup>

	JIS	AWG	DIN
AL	520	1000	500
CU	520	1000	500
ACSR	520	1000	500

- Copper lugs up to 500 mm<sup>2</sup>  
Aluminum lugs up to 590 mm<sup>2</sup>
- Die sets sold separately (See page 157)

## ■ Features:

- Yoke-type head design is solid and durable
- Convenient handle makes handling and hoisting easier.
- Positive die locking mechanism holds dies firmly in place.
- Operated by any hydraulic pump with rated oil pressure of 700 bar (10,000 psi).
- Single action cylinder with spring return.

## ■ Accessories:

Metal Case



**MANUAL**  
Follow User Guide

**MAINTAIN**  
Maintain Regularly

**PROTECTION**  
Put On Goggles

**PROTECTION**  
Work With Glove



**HEXAGONAL**

**INDENT TYPE**

**TERMINAL**



## ■ Model No. **HYCP-60ST**

Height : 446 mm

Weight : 21.3 kgs

## ■ Specifications:

Max. Pressure : 700 bar

Oil Required : 308 cc

Max. Output : 55 tons / 539 kN

Ram Stroke : 38.7 mm

## ■ Crimping Capacity:

- Crimping Range : up to 60mm O.D. Sleeve
- Accepts all dies used for Alcoa, 60 ton compressors
- Single-Acting hydraulic pump required
- Dies are manufactured on request only (See page 157)

## ■ Features:

- Operated by any hydraulic pump with rated oil pressure of 700 bar (10,000 psi).
- Single action cylinder with spring return.
- Detachable ground stand as a standard accessory.
- Large handle for easy carrying.
- Removable die cap for easy connector positioning.
- Solid metal loop at base for hoist work.
- Compression head is designed as a portable tool for installing compression sleeves and terminals for transmission construction and/or maintenance work.

## ■ Accessories:

Metal Case



※ Crimping without die sets is prohibited.



## ■ Model No. **HYCP-60D**

Height : 446 mm

Weight : 23.3 kgs

## ■ Specifications:

Max. Pressure : 700 bar

Oil Required : 298 cc

Max. Output : 55 tons / 539 kN

Ram Stroke : 38 mm

## ■ Crimping Capacity:

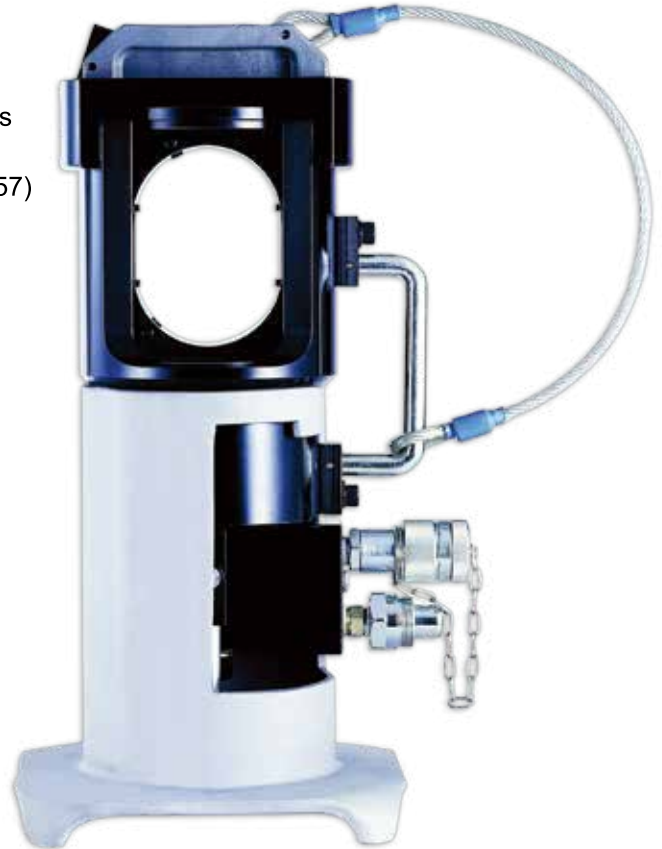
- Crimping Range : up 60mm O.D.Sleeve
- Accepts all dies used for Alcoa, 60 ton compressors
- Double-Acting hydraulic pump required
- Dies are manufactured on request only (See page 157)

## ■ Features:

- Solid metal loop at base for hoist work.
- Ram retracts hydraulically ; the ram retracting time is 1/3 of spring return.
- Operated by any double-acting hydraulic pump with rated oil pressure of 700 bar (10,000psi).
- Detachable ground stand as a standard accessory.
- Large handle for easy carrying.
- Compression head is designed as a portable tool for installing compression sleeves and terminals for transmission construction and/or maintenance work.

## ■ Accessories:

Metal Case



※ Crimping without die sets is prohibited.





## ■ Model No. **UA-100STS**

Height : 378 mm  
Weight : 36.0 kgs

### ■ Specifications:

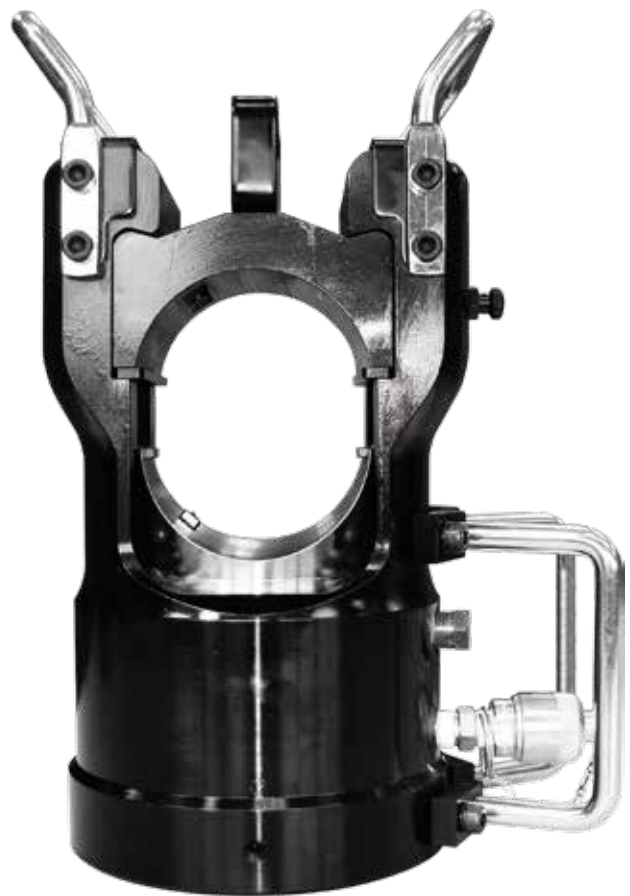
Max. Pressure : 700 bar  
Oil Required : 420 cc  
Max Output : 100 tons / 980 kN  
Ram Stroke : 29.5 mm

### ■ Crimping Capacity:

- Crimping Range:
  - Copper : up to 64 mm O.D.Sleeve
  - Aluminum : up to 71 mm O.D.Sleeve
  - Steel : up to 32 mm O.D.Sleeve
- Double-Acting hydraulic pump required

### ■ Features:

- Operated by any double-acting hydraulic pump with rated oil pressure of 700 bar (10,000 psi).
- Functional handles for easy carrying and repositioning.
- Removable die cap for easy connector positioning.
- Ram retracts hydraulically; the ram retracting time is 1/3 of spring return.
- Compression head is designed as a portable tool for installing compression sleeves and terminals for transmission construction and / or maintenance work.



※ Crimping without die sets is prohibited.



**HEXAGONAL** **INDENT TYPE** **TERMINAL**



**MANUAL** **MAINTAIN** **PROTECTION** **PROTECTION**

# COMPRESSION HEAD

## ■ Model No. **UA-100ST**



Height : 378 mm  
Weight : 37.6 kgs

## ■ Specifications:

Max. Pressure : 700 bar  
Oil Required : 420 cc  
Max Output : 100 tons / 980 kN  
Ram Stroke : 29.5 mm

## ■ Crimping Capacity:

- Crimping Range:
  - Copper : up to 64 mm O.D.Sleeve
  - Aluminum : up to 71 mm O.D.Sleeve
  - Steel : up to 32 mm O.D.Sleeve
- Double-Acting hydraulic pump required

## ■ Features:

- Operated by any double-acting hydraulic pump with rated oil pressure of 700 bar (10,000 psi).
- Functional handles for easy carrying and repositioning.
- Removable die cap for easy connector positioning.
- Ram retracts hydraulically; the ram retracting time is 1/3 of spring return.
- Compression head is designed as a portable tool for installing compression sleeves and terminals for transmission construction and / or maintenance work.



※ Crimping without die sets is prohibited.



## ■ Model No. **SR-100C**

Height : 364 mm

Weight : 31.4 kgs

## ■ Specifications:

Max. Pressure : 700 bar

Oil Required : 318 cc

Max. Output : 100 tons / 980 kN

Ram Stroke : 22 mm

## ■ Crimping Capacity:

• Crimping Range:

Copper : up to 64 mm O.D.Sleeve

Aluminum : up to 71 mm O.D.Sleeve

Steel : up to 32 mm O.D.Sleeve

• Double-Acting hydraulic pump required

• Dies are manufactured on request only (See page 158)

## ■ Features:

- Operated by any double-acting hydraulic pump with rated oil pressure of 700 bar (10,000 psi).
- Functional handles for easy carrying and repositioning.
- Removable die cap for easy connector positioning.
- Ram retracts hydraulically ; the ram retracting time is 1/3 of spring return.
- Compression head is designed as a portable tool for installing compression sleeves and terminals for transmission construction and/ or maintenance work.



**HYCP-100ST**

※ Crimping without die sets is prohibited.



## ■ Model No. 100W

Height : 378 mm  
Weight : 33.8 kgs

## ■ Specifications:

Max. Pressure : 700 bar  
Oil Required : 385 cc  
Max Output : 100 tons / 980 kN  
Ram Stroke : 26.9 mm

## ■ Crimping Capacity:

- Crimping Range:
  - Copper : up to 64 mm O.D.Sleeve
  - Aluminum : up to 71 mm O.D.Sleeve
  - Steel : up to 32 mm O.D.Sleeve
- Double-Acting hydraulic pump required
- Dies are manufactured on request only (See page 158)

## ■ Features:

- Operated by any double-acting hydraulic pump with rated oil pressure of 700 bar (10,000 psi).
- Functional handles for easy carrying and repositioning.
- Removable die cap for easy connector positioning.
- Ram retracts hydraulically; the ram retracting time is 1/3 of spring return.
- Compression head is designed as a portable tool for installing compression sleeves and terminals for transmission construction and / or maintenance work.



※ Crimping without die sets is prohibited.



## ■ Model No. 200W

Height: 445 mm

Weight: 78 kgs

## ■ Specifications:

Max. Pressure : 700 bar

Oil Required : 1049 cc

Max. Output : 200 tons / 1960 kN

Ram Stroke : 37 mm

## ■ Crimping Capacity:

- Crimping Range :
  - Copper : up to 86 mm O.D.Sleeve
  - Aluminum : up to 100 mm O.D.Sleeve
  - Steel : up to 50 mm O.D.Sleeve
- Double-Acting hydraulic pump required
- Dies are manufactured on request only or current die set available sold separately (See page 158)

## ■ Features:

- Operated by any double-acting hydraulic pump with rated oil pressure of 700 bar (10,000 psi).
- Functional handles for easy carrying and repositioning.
- Removable die cap for easy connector positioning.
- Ram retracts hydraulically ; the ram retracting time is 1/3 of spring return.
- Compression head is designed as a portable tool for installing compression sleeves and terminals for transmission and/ construction or maintenance work.



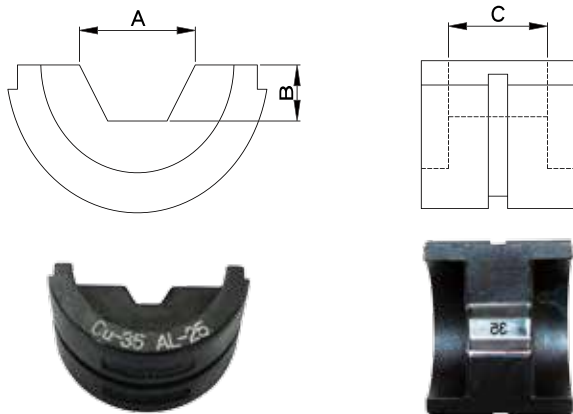
※ Crimping without die sets is prohibited.



■ For LEC-U27, LEC-32, LEC-40, LEC-44, UB-400(HE), UCP-2712(HE), UB-412(HE), H-412HE, HYCP-4413(HE), ADP-15THE, ADP-630HE, ADP-451000HE

• Hex Dies for Copper Lugs

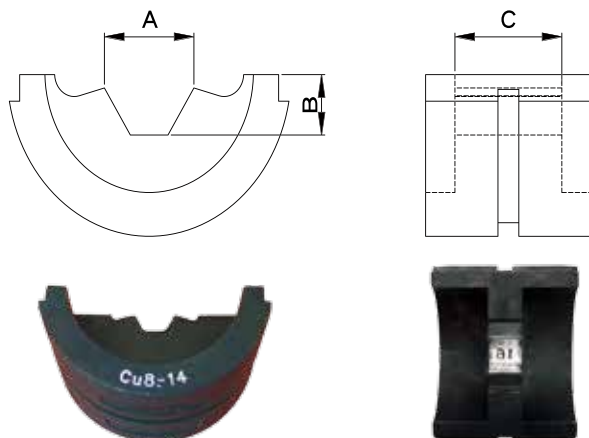
Suitable for TERMINALS with wall thickness little less than DIN 46235 Cable Lugs



Unit: mm

Die No.	A	B	C
CU-16	7.20	3.12	14.00
CU-25	8.43	3.67	14.00
CU-35	10.00	4.33	16.00
CU-50	11.60	5.02	16.00
CU-70	13.70	5.95	15.60
CU-95	15.90	6.85	15.70
CU-120	17.98	7.79	16.00
CU-150	20.10	8.70	15.00
CU-185	22.33	9.67	14.00
CU-240	25.43	11.01	13.00
CU-300	28.44	12.32	11.20
CU-400	30.00	14.55	11.50

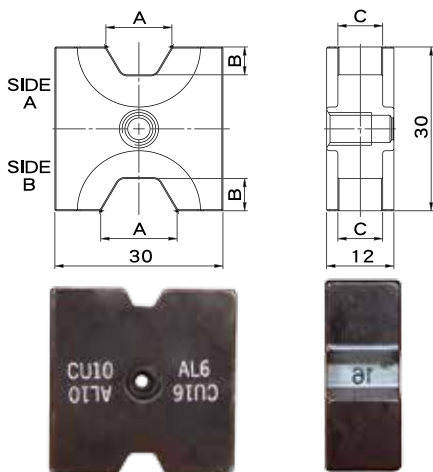
• Hex Dies for Solderless Terminals



Unit: mm

Die No.	A	B	C
CU-8-14	7.40	3.50	8.00
CU-22	8.80	4.30	10.00
CU-38	11.50	5.40	11.50
CU-60-70	13.40	6.00	15.00
CU-80	15.00	6.75	18.00
CU-100	18.00	8.00	15.00
CU-150-180	21.00	9.10	13.00
CU-200	28.44	12.32	11.20
CU-325	30.00	14.56	11.50

■ For LEC-185T, LEC-240T, K-185, K-240, HYCP-185(HE), HYCP-240(HE)



Unit: mm

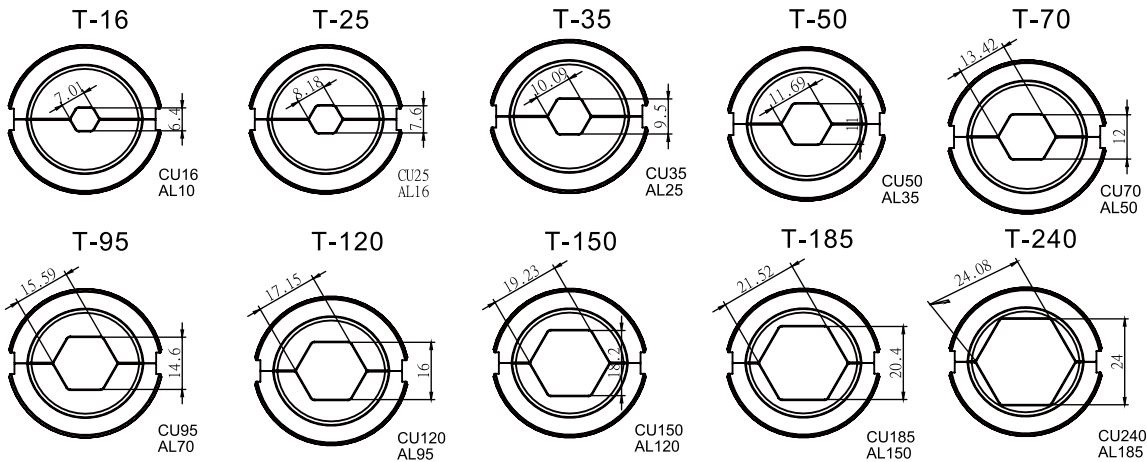
Die No.	Side		A	B	C
AHE-1016	A	CU10	5.45	2.30	12.00
	B	CU16	6.80	2.85	12.00
AHE-2535	A	CU25	8.35	3.50	9.00
	B	CU35	9.40	4.00	9.00
AHE-5070	A	CU50	11.35	4.80	9.00
	B	CU70	13.80	6.05	9.00
AHE-95120	A	CU95	16.17	6.90	9.00
	B	CU120	18.05	7.60	9.00
AHE-150	A	CU150	20.15	8.55	6.00
AHE-185	A	CU185	22.15	9.35	6.00
AHE-240	A	CU240	22.15	9.35	6.00

• AHE-240 Die For 240 Series Only.

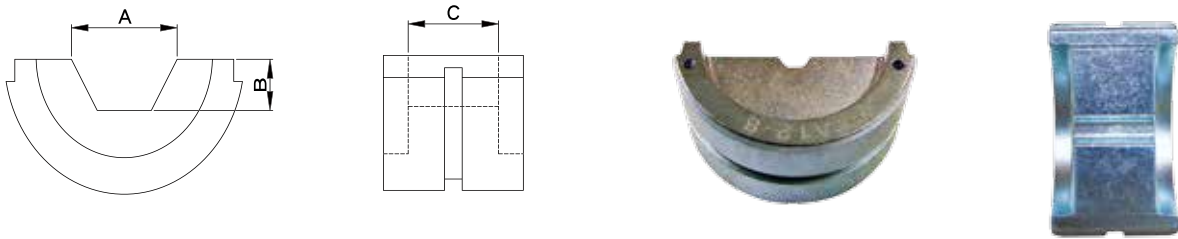


## ■ DIES FOR LEC-240, K-PH240, PH-240(HE) DIN (CU) 46235 DIN (AL) 46267

DIE NO.	Cross the flats dimension (MM)	Height (MM)	SIZE
T-16	7.01	6.40	8 CU 16 / AL10
T-25	8.18	7.60	10 CU 25 / AL16
T-35	10.09	9.50	12 CU 35 / AL25
T-50	11.69	11.00	14 CU 50 / AL35
T-70	13.42	12.00	16 CU 70 / AL50
T-95	15.59	14.60	18 CU 95 / AL70
T-120	17.15	16.00	20 CU 120 / AL95
T-150	19.23	18.20	22 CU 150 / AL120
T-185	21.52	20.40	25 CU 185 / AL150
T-240	24.08	24.0	28 CU 240 / AL185



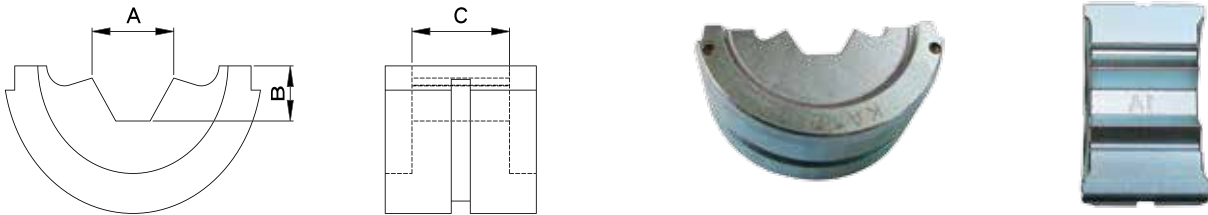
## ■ DIES FOR CRIMPING COLOR-CODED COPPER & ALUMINUM LUGS & SPLICES



Unit: mm

"KA"STYLE DIES : ALUMINUM					
DIE NO.	A	B	C	CABLE SIZE	COLOR
KA12-8	5.68	2.26	16	8 AWG	Blue
KA12-4/0	20.08	8	16	4/0 AWG	White
KA12-250	21.96	8.76	16	250 kcmil (MCM)	Red
KA12-300	23.8	9.5	19	300 kcmil (MCM)	Blue
KA12-350	27.72	11.05	19	350 kcmil (MCM)	Brown
KA12-400	28.02	11.18	16	400 kcmil (MCM)	Green
KA12-500	30.25	12.45	16.26	500 kcmil (MCM)	Pink
KA12-600	33.66	13.97	16.26	600 kcmil (MCM)	Black
KA12-750	35.81	14.73	16.26	750 kcmil (MCM)	Yellow

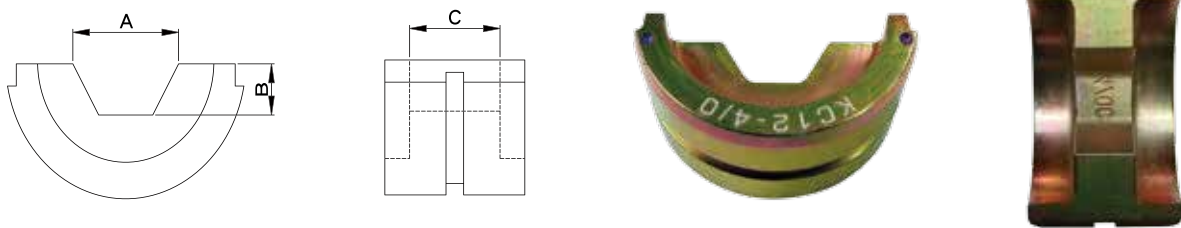
# CRIMPERS DIES



Unit: mm

"KA" STYLE DIES : ALUMINUM					
DIE NO.	A	B	C	CABLE SIZE	COLOR
KA12-6	7.29	2.92	16	6 AWG	Gray
KA12-4	8.79	3.81	16	4 AWG	Green
KA12-2	10.47	4.57	16	2 AWG	Pink
KA12-1	11.57	5	22.5	1 AWG	Gold
KA12-1/0	12.78	5.59	22.5	1/0 AWG	Tan
KA12-2/0	14.43	6.25	13	2/0 AWG	Olive
KA12-3/0	15.70	6.86	13	3/0 AWG	Ruby

## ■ DIES FOR CRIMPING COLOR-CODED COPPER & ALUMINUM LUGS & SPLICES



Unit: mm

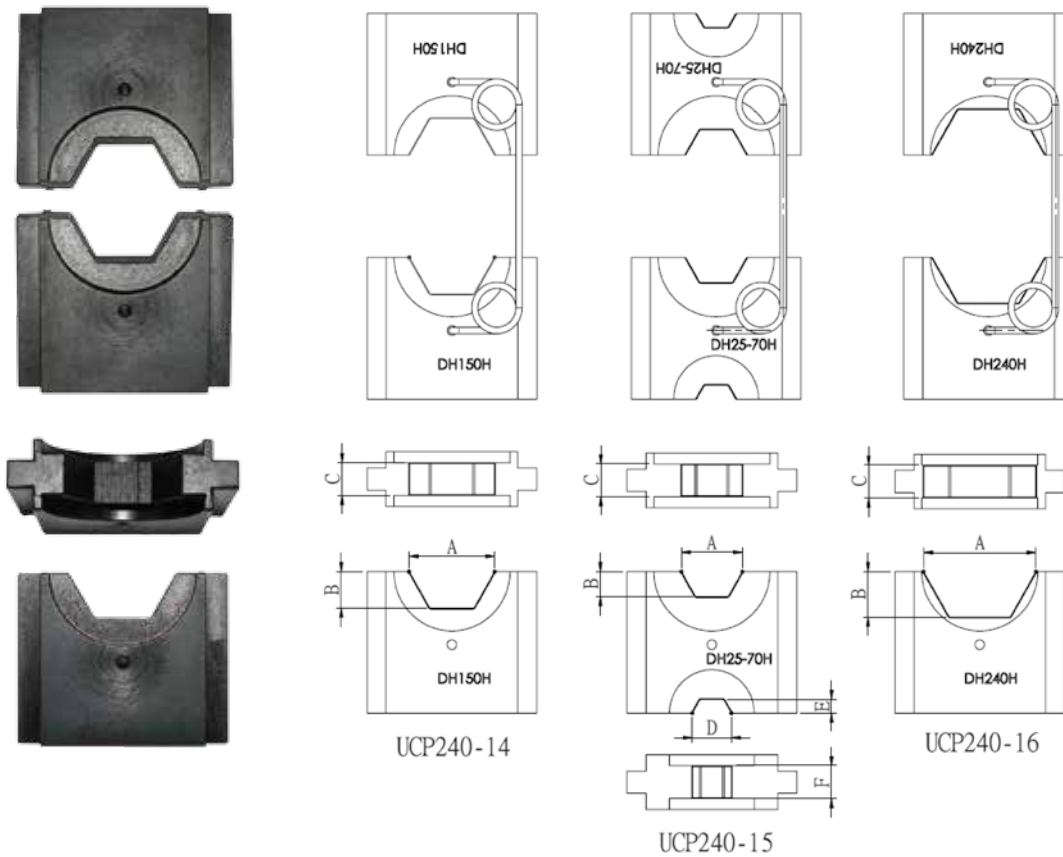
"KC" STYLE DIES : COPPER					
DIE NO.	A	B	C	CABLE SIZE	COLOR
KC12-8	11.44	4.94	8	8 AWG	Gray
KC12-6	10.38	4.5	8	6 AWG	Blue
KC12-4	8.7	4.94	8	4 AWG	Gray
KC12-2	7.14	4.5	8	2 AWG	Brown
KC12-1	5.87	2.54	8	1 AWG	Green
KC12-1/0	12.7	5.5	10	1/0 AWG	Pink
KC12-2/0	13.9	6.02	10	2/0 AWG	Black
KC12-3/0	14.97	6.48	10	3/0 AWG	Orange
KC12-4/0	16.78	7.26	10	4/0 AWG	Purple
KC12-250	18.03	7.8	10	250 kcmil (MCM)	Yellow
KC12-300	19.84	8.59	10	300 kcmil (MCM)	White
KC12-350	21.65	9.37	10	350 kcmil (MCM)	Red
KC12-400	22.49	9.7	10	400 kcmil (MCM)	Blue
KC12-500	25.99	11.25	10	500 kcmil (MCM)	Brown
KC12-600	28.64	12.4	10	600 kcmil (MCM)	Green
KC12-750	30.26	13.1	10	750 kcmil (MCM)	Black

■ **DIES FOR USE WITH SERVICE ENTRANCE CONNECTORS, C-TAPS, H-TAPS, OVERHEAD AND UNDERGROUND CONNECTORS**

DIE NO.	BURNDY NO	DIE NO.	BURNDY NO	DIE NO.	BURNDY NO	DIE NO.	BURNDY NO
KD12-10	U-BG	KD12-11	U-O	KD12-12	U-C	KD12-14	U-161
KD12-15	U-162	KD12-16	U-163	KD12-17	U-165	KD12-18	U-166
KD12-19	U-243	KD12-20	U-247	KD12-21	U-249	KD12-30	U-D3
KD12-31	U-E	KD12-32	U-F	KD12-33	U-997	KD12-35	U-238
KD12-36	U-654	KD12-37	U-655	KD12-38	U-658	KD12-39	U-659
KD12-40	U-998						

## ■ For LEC-U240, UCP-240(HE)

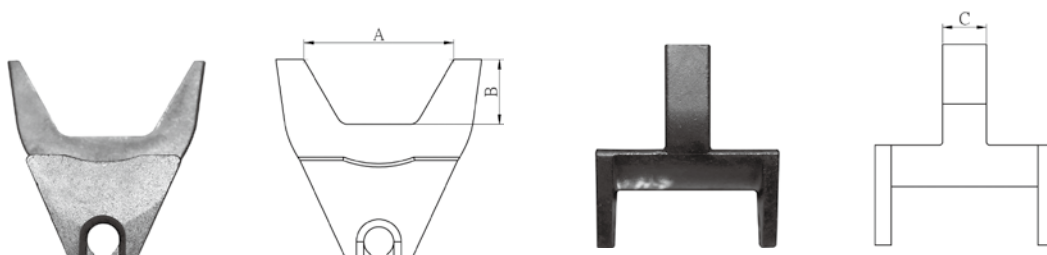
DIE NO.	A	B	C	D	E	F
UCP240-14	19	8	7.2	—	—	—
UCP240-15	14	5.5	7.2	9	3	7.2
UCP240-16	25	10	7.2	—	—	—



## ■ For HYCP-15THE

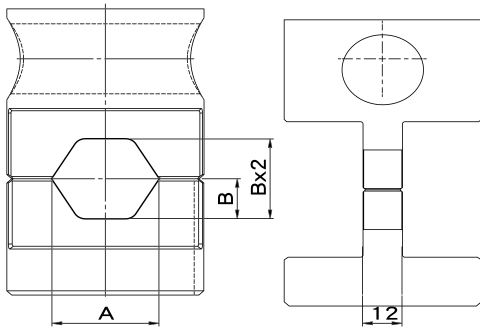
- Hex Dies for Copper tubular sleeves and lugs, for crimping to copper cables, according to NFC 20.130 standard

DIE NO.	A	B	C
15THE-CU400	32.56	14.10	10.60
15THE-CU500	36.03	15.60	10.60
15THE-CU630	42.84	18.55	10.60



## ■ For HYCP-630HE

- Hex Dies for Copper tubular sleeves and lugs, for crimping to copper cables, according to NFC 20.130 standard



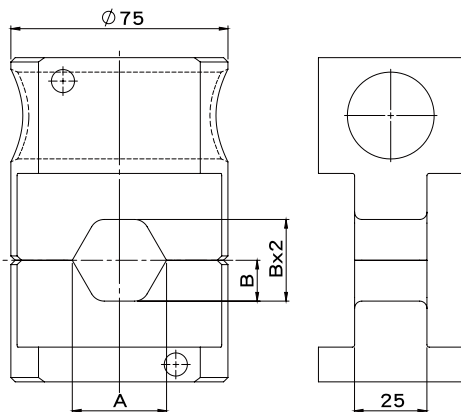
Unit : mm

Die No.	A	B
630HE-CU 400	32.56	14.10
630HE-CU 500	36.03	15.60
630HE-CU 630	42.84	18.55



## ■ For HYCP-451000HE

- Hex Dies for Copper tubular sleeves and lugs, for crimping to copper cables, according to NFC 20.130 standard



Unit : mm

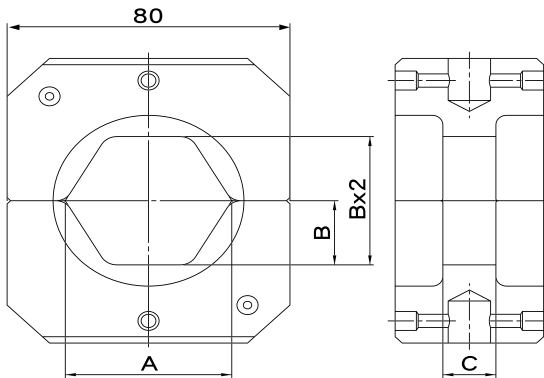
Die No.	A	B
451000HE-CU 400	32.56	14.10
451000HE-CU 500	36.03	15.60
451000HE-CU 630	42.84	18.55
451000HE-CU 800	48.38	20.95
451000HE-CU 1000	52.77	22.85



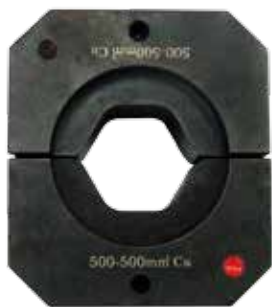
## ■ For HYCP-500HE

- Hex Dies for Copper & Aluminum Conductors  
Suitable for JIS C2804 terminals

Unit : mm



Die No.	A	B	C
500HE-160AI	28.75	12.70	50
500HE-150CU	32.56	14.10	30
500HE-400CU	33.14	14.35	30
500HE-500CU	36.72	15.90	30
500HE-500AI	52.20	22.85	50
500HE-800AI	56.80	24.85	50



### FOR STEEL SLEEVE

C : Die Width

Die No.	A	B	C
500HE-S17.4	17.40mm	7.53mm	42mm
500HE-S18.5	18.50mm	8.01mm	42mm
500HE-S21	21mm	8.74mm	12mm

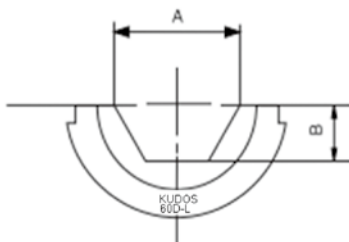
### FOR ALUMINUM SLEEVE

C : Die Width

Die No.	A	B	C
500HE-L37	37mm	16.02mm	42mm
500HE-L46	46mm	19.92mm	42mm
500HE-L54	54mm	22.95mm	42mm

## ■ For HYCP-60ST / HYCP-60D DIES

(image and figure for reference only)



### FOR STEEL SLEEVE

unit: mm

DIE NO.	A	B	C
60G-14	13.90	5.95	37.10
60G-16	15.85	6.80	33.10
60G-18	17.90	7.60	29.40
60G-20	19.80	8.60	30.20
60G-22	21.80	9.25	23.10
60G-24	23.90	10.25	22.10
60G-26	25.85	11.00	20.10
60G-28	27.65	11.80	20.10
60G-30	29.70	12.70	20.20

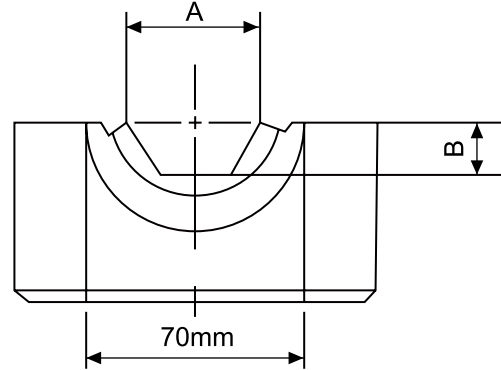
### FOR ALUMINUM SLEEVE

unit: mm

DIE NO.	A	B	C
60L-21	21.00	9.00	19.00
60L-28.62	28.62	12.00	43.00
60L-31.77	31.77	13.13	57.00
60L-32	31.35	13.60	59.00
60L-34	33.45	14.40	58.20
60L-36	35.40	15.20	55.10
60L-38	37.35	16.10	51.90
60L-40	39.40	17.00	49.30
60L-42	41.90	17.90	46.90
60L-45	44.30	19.20	44.10
60L-48	47.25	20.45	41.10
60L-50	49.20	21.30	40.20
60L-52	51.25	22.10	37.40
60L-55	54.25	23.45	39.75

■ **For SR-100C / HYCP-100ST / 100W DIES**

(image and figure for reference only)



**FOR STEEL SLEEVE**

C : Die Wdth

Die No.	A	B	C
100ST-G12	12mm	5.20mm	40mm
100ST-G18	18mm	7.80mm	35mm
100ST-G20	20mm	8.70mm	35mm
100ST-G22	22mm	9.50mm	35mm

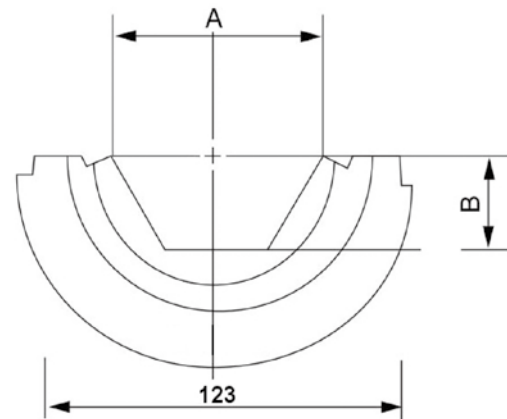
**FOR ALUMINUM SLEEVE**

C : Die Wdth

Die No.	A	B	C
100ST-L24	24mm	10.50mm	75mm
100ST-L30	30mm	12.50mm	75mm
100ST-L40	40mm	17.50mm	75mm
100ST-L42	42mm	18.20mm	75mm
100ST-L45	45mm	20.50mm	75mm
100ST-L52	52mm	22.50mm	75mm

■ **For 200W DIES**

(image and figure for reference only)



**FOR STEEL SLEEVE**

C : Die Wdth

Die No.	A	B	C
200W-G24	24mm	10.40mm	60mm

**FOR ALUMINUM SLEEVE**

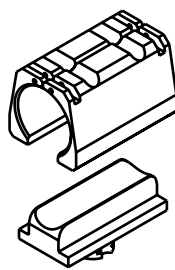
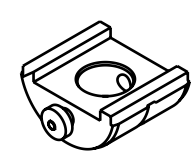
C : Die Wdth

Die No.	A	B	C
200W-L24	24mm	10.40mm	128mm
200W-L32	32mm	14.10mm	128mm
200W-L70	70mm	30.70mm	128mm

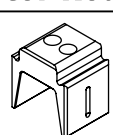
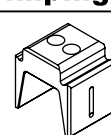
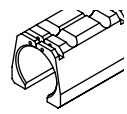
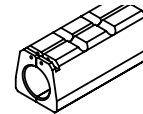
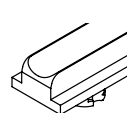
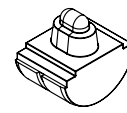
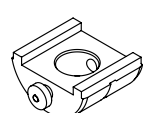
## ■ Die Sets for HEC-U27、UCP-2712

Die Holder	Die (Indent Crimp)		Indentor
[ 1 ]	[ 2 ]	[ 5 ]	[ 6 ]
DH27-150	RU27-35	CD27-35	AI27-35
	RU27-95	CD27-95	AI27-95
DH27-240	RU27-150	CD27-150	AI27-150
	RU27-240	CD27-240	AI27-240

## ■ Pre-Rounders Selection

Aluminum Conductor Size (mm <sup>2</sup> )	Pre-Rounder [ 2 ] + [ 3 ]		Die Support [ 4 ]
			
25	RU27-35	RL27-25	DS27-P
35		RL27-35	
50	RU27-95	RL27-50	
70		RL27-70	
95		RL27-95	
120	RU27-150	RL27-120	
150		RL27-150	
185	RU27-240	RL27-185	
240		RL27-240	

## ■ Die Sets for HEC-U27

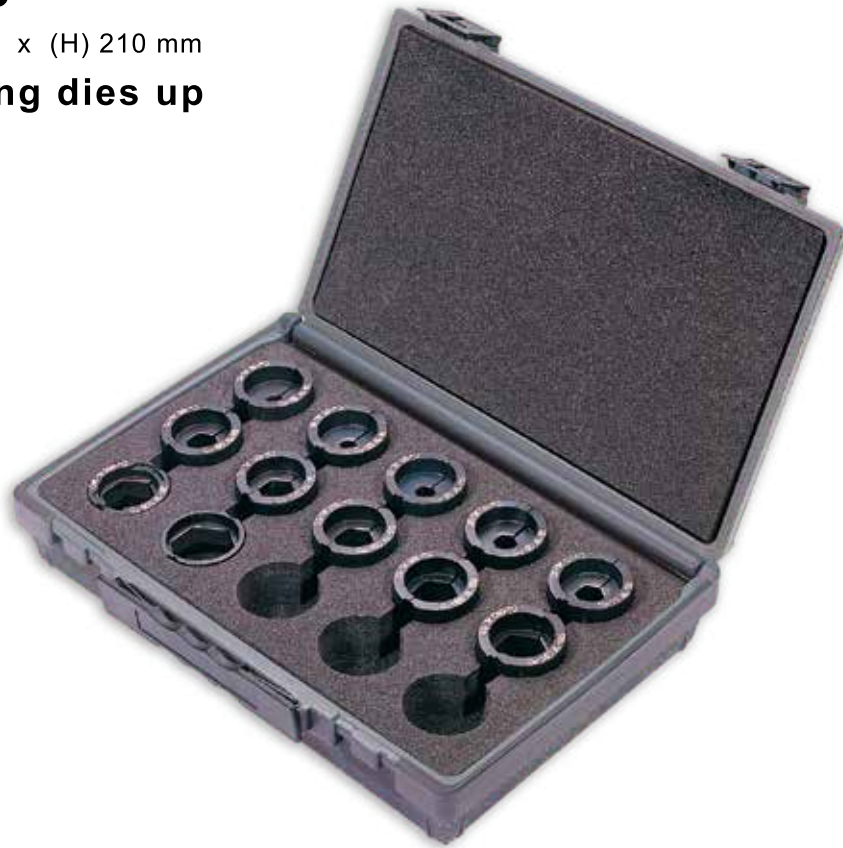
Conductor Rounding	Crimping	Description
[ 1 ] 	[ 1 ] 	[1] Die Holder [2] Pre-Rounders (Upper die) [3] Pre-Rounders (Lower die) [4] Die Support [5] Containing Die [6] E Indentor
[ 2 ] 	[ 5 ] 	
[ 3 ] 	[ 6 ] 	
[ 4 ] 		



## ■ Model No. **DC-15**

• (L) 300 mm x (W) 70 mm x (H) 210 mm

■ For 12 ton crimping dies up to 15 sets.



## ■ Model No. **DC-06**

• (L) 140 mm x (W) 55 mm x (H) 110 mm

■ For 12 ton crimping dies up to 6 sets.

